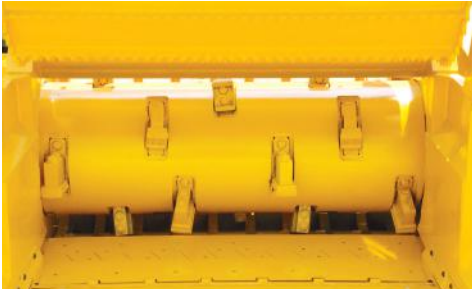
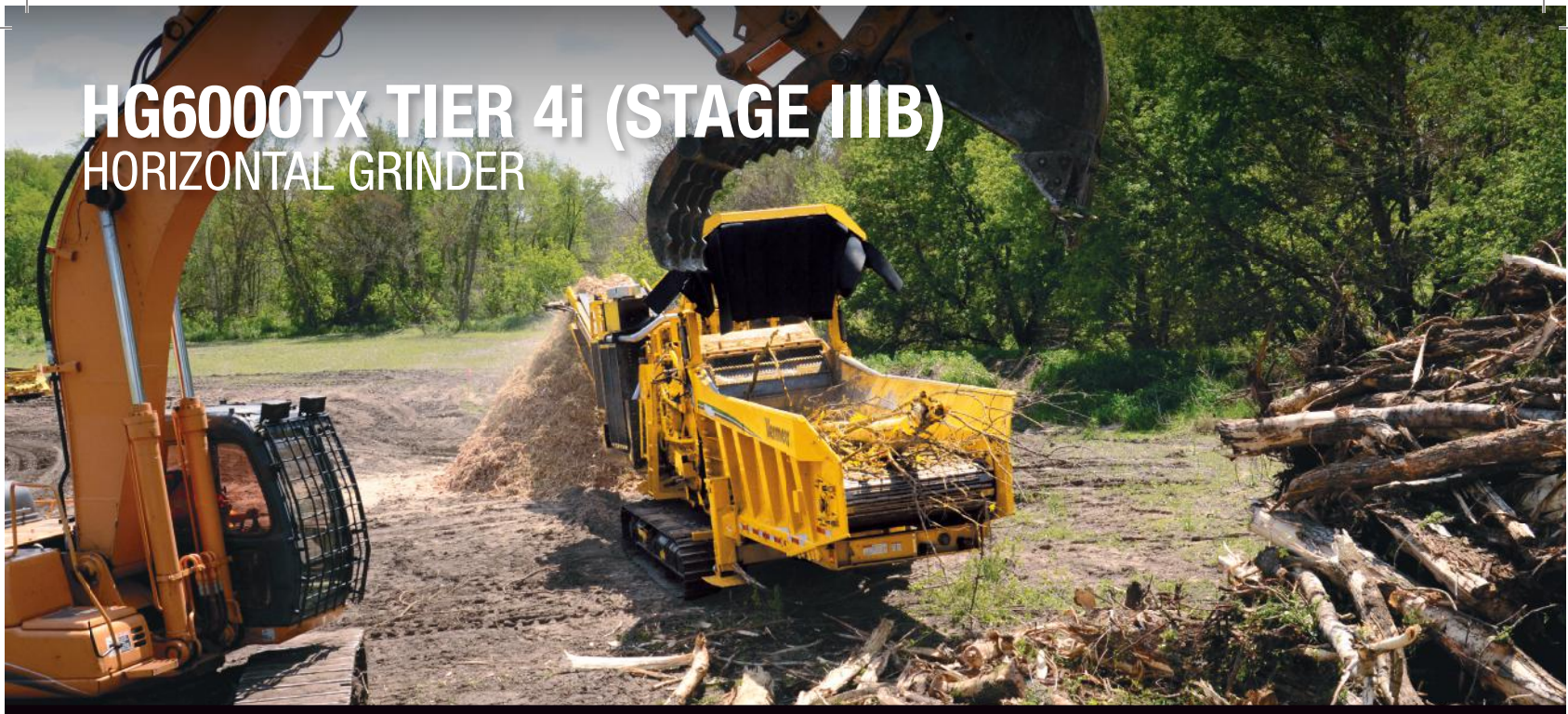


HG6000TX TIER 4i (STAGE IIIB) HORIZONTAL GRINDER



OPTIMAL CUTTING PERFORMANCE. The patented Series II duplex drum offers proven cutting performance, and reversible hammers and tips nearly double the wear life of single-sided designs and simplify daily maintenance.



CHIP PRODUCTION. The optional chip drum produces a consistently chipped end product, rather than traditional shredded material, for uses such as biofuel.



PROGRESSIVE PROCESSING. The patented SmartGrind system monitors engine rpm and adjusts grinding speed to increase productivity. The open-ended, wide infeed table makes material loading easy and efficient.



PRODUCT SIZING. The dual-screen design, along with several screen options, helps boost processing efficiency while controlling end-product sizing needs.



JOBSITE SAFETY. The thrown object deflector (TOD) reduces the amount and distance of thrown material debris, while also reducing interference when loading over-length material.



MOBILITY. The track-driven grinder offers onsite mobility, with a remote control for easy maneuverability. The DT6 optional integrated dolly transport system eliminates the need for a dedicated trailer to move between sites.

HG6000TX TIER 4i (STAGE IIIB) HORIZONTAL GRINDER

GENERAL DIMENSIONS

Max transport length: 37.3' (11.4 m)

Max transport length with dolly: 45.8' (13.9 m)

Max transport width: 9.2' (2.8 m)

Max transport width with dolly: 9.8' (3 m)

Max transport height: 148" (375.9 cm)

Max transport height with dolly: 155" (393.7 cm)

Weight: 75,000 lb (34,019.4 kg)

Weight with dolly: 86,500 lb (39,235.7 kg)

ENGINE

Model: Caterpillar C18 Tier 4i (Stage IIIB)

Max gross horsepower: 755 hp (563 kW)

Fuel tank capacity: 350 gal (1324.9 L)

INFEED CONVEYOR

Feed table width: 60" (152.4 cm)

Feed table length: 20' (6.1 m)

Loading height: 8.1' (2.5 m)

INFEED ROLLER

Max feed height: 32" (81.3 cm)

Infeed roller diameter: 36.1" (91.8 cm)

DUPLEX DRUM

Millbox opening: 60" x 32" (152.4 cm x 81.3 cm)

Drum diameter: 28" (71.1 cm)

Number of hammers: 10

Number of tips: 20

CHIP DRUM OPTION

Millbox opening: 60" (152.4 cm)

Drum diameter: 34.3" (87.1 cm)

Depth of cut: Ranging from .125" to 1.5" (3.2 mm to 38.1 mm)

Number of knives: 28

DISCHARGE SYSTEM

Belt length: 81.3' (24.8 m)

Belt width: 48" (121.9 cm)

Belt design: 3-ply – 330# or straight warp single ply 330# both with V-cleat

HYDRAULIC SYSTEM

Tank capacity: 100 gal (378.5 L)

Implement pump type: Variable displacement, axial piston

Discharge conveyor pump: Fixed displacement, gear pump

CONTROLS

Stationary: Side-mounted LCD control station

Remote: Multifunction with built-in LCD display, max 300' (91.4 m) operating range

TRACKS

Track frame description: Rigid frame with reinforced box section

Track type: D5 double grouser

High speed travel: 2.6 mph (4.2 km/h)

Track width option one: 26" (66 cm)

Track width option one ground bearing pressure – soft ground: 10.2 psi (70.3 kPa)

Track width option one ground bearing pressure – hard ground: 55.6 psi (383.3 kPa)

Track width option two: 20" (50.8 cm)

Track width option two ground bearing pressure – soft ground: 13.2 psi (91 kPa)

Track width option two ground bearing pressure – hard ground: 72.2 psi (497.8 kPa)